



TRAVEL PENDANT

Thinking about creating a lasting memory of your favorite life moments? Cindy has a great idea! Explore her signature Travel Series, which transforms cherished experiences into wearable art. “My Travel Series became a sensation during the pandemic. People loved customizing their favorite travel moments with me. That’s why I chose a travel-inspired design for this collaboration with the Polymer Week Advent Calendar. Enjoy!” says Cindy.

ABOUT CINDY TANARTAH

Hailing from Indonesia, Cindy Tanartah is the creative force behind the jewelry brand ANDSEE!. She crafts vibrant, handcrafted pieces that blend materials like polymer clay and ceramics, designed for curious, quirky minds with purpose. “The brand’s name reflects the sense of sight—encouraging a shift in perspective to view the world differently, in a positive yet ‘rebellious’ way,” Cindy explains.



www.instagram.com/andseestudio

Advent Calendar



PRODUCTS IN THE ADVENT CALENDAR

FIMO POLYMER CLAY

For this project, only a small amount of clay is needed. You can enjoy samples of Fimo blocks in various colors: granite, pink, aqua, sahara, leaf green, and yellow.

LIST OF TOOLS AND MATERIALS

- Fimo polymer clay
- pasta machine
- acrylic roller
- rigid blade
- scalpel
- dotting tools
- Sculpting tools
- Handy drill and drill bit
- Jewelry findings
- Pliers
- glitter

Advent Calendar



Choose a photo of your favorite moment as a photo reference. You can print it to be able to focus on little details.



Prepare all clay colors that you need to create this design. Mix unique shades that will fit the photo reference. In this case, the "The Lupins" flower in New Zealand will be the main focus.



Create a base clay shape, you can use any color you like - in this pendant granite clay was used. Cut out the chosen shape and start working from the background and add a sheet of thin blue clay sheet as a sky part.



Using rigid blade, work toward the lake, rocks and grass parts, with the same cutter for precision.



Cut out a separate shape presenting a little hill across the water and place it on the blue sky area.



Texture is essential in creating high-intricacy design. You can add texture on the green hill using a dotting tool.



Then texture the lake with a ball tool again, and add additional green bits of clay on the grass to make it more realistic.



Rocks are created by cutting little gray pieces in tiny amounts and stacking them over each other, then texturing with scalpel.



Move on to Lupins flowers and add tiny colorful pieces of clay, and using a dotting tool, place them on the grass area.

Advent Calendar



Add a second layer of light-colored flowers.



Condition a thin sheet of beige colored clay representing the woman's object.



Cut out the shape of the woman's body, head and neck with a scalpel. Place on the landscape and press to attach.



Then cover with another shape of different color representing the dress.



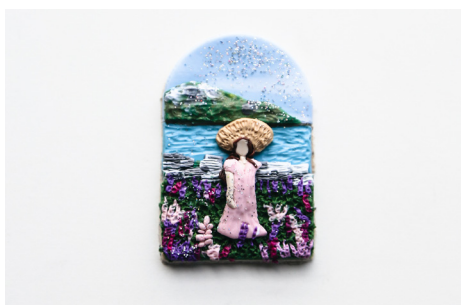
Using a little darker beige colored clay, you can shape the hat part from a thicker sheet of clay, and place it behind the head to create volume.



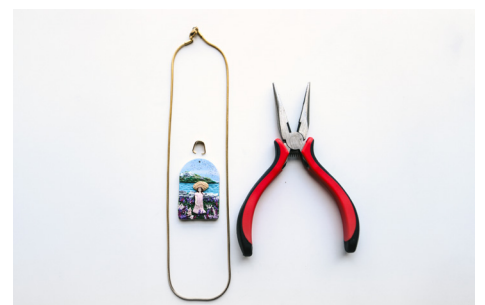
Using dark-brown colored clay, create the hair and place it between the hat and head area.



Texture the hat area with a sculpting tool. Create an arm from beige clay and place on the side of the dress.



Additionally, add more of the flowers. Then, add glitter for sparkle and bake for 30 minutes.



Prepare the findings and pliers for assembling the baked pendant - chain with a clasp, and a pinch bail. Drill a small hole at the upper part of the baked pendant.

Advent Calendar



Then, your pendant representing your favorite memory is finished! The best part is you can wear them for yourself.

