



STAINED GLASS MOSAIC

Create a stunning mosaic entirely from polymer clay! Whether you prefer intricate details or a simpler design, the possibilities are endless. This process is one of the most mindful and enjoyable techniques Heidi Helyard has developed: "I truly love making these," she shares. With the freedom to reuse old cane pieces and experiment with colors and shapes, this project is perfect for crafting unique decor for your home or Christmas tree.

ABOUT HEIDI HELYARD

Australian artist Heidi Helyard creates limited edition, handmade jewelry and homewares using polymer clay, fiber craft, and repurposed materials. With a unique eye for color and a dedication to craftsmanship, her pieces stand out for their individuality. Embracing imperfections as part of her process, Heidi's work celebrates tactile beauty through highly textured, 3D-painted designs that engage both sight and touch.



www.heidihelyard.com
www.instagram.com/heidihelyard



PRODUCTS IN THE ADVENT CALENDAR

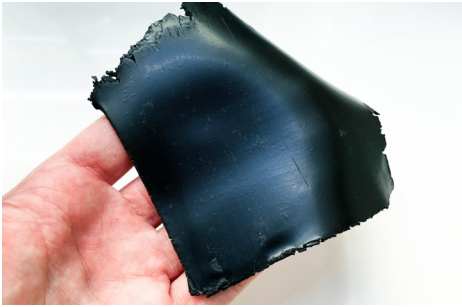
SCULPEY CLAY SOFTENER & THINNER

This liquid medium is perfect for softening polymer clay. Just a few drops can make all the difference, especially for projects like Heidi's and the backfilling technique, where a softer clay consistency is required. It also helps improve the texture of dry, crumbly clay.

LIST OF TOOLS AND MATERIALS

- black clay (Premo or Souffle)
- Colorful scrap clay and simple canes
- ceramic tile
- clay softener
- tissue blade
- wavy blade
- scalpel
- tweezers
- circle cutter, and micro cutters
- sanding paper grit 80 - 1000
- renaissance wax
- cornstarch
- cord

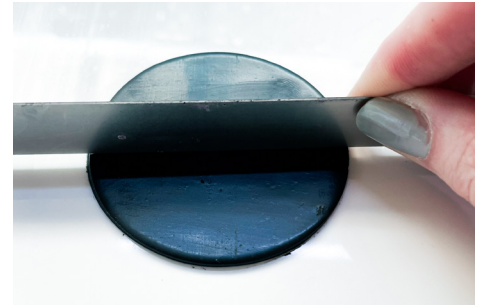
Advent Calendar



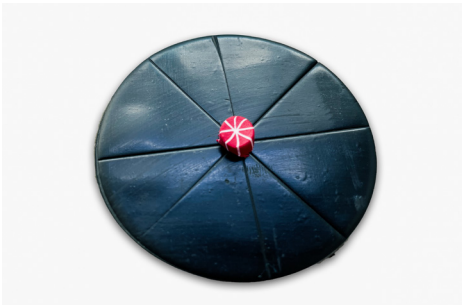
Condition and roll a thin sheet of the black clay onto a ceramic tile.



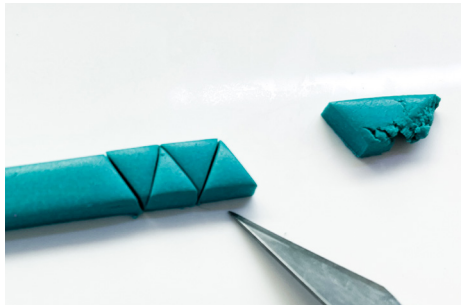
Cut a circle shape of desired diameter.



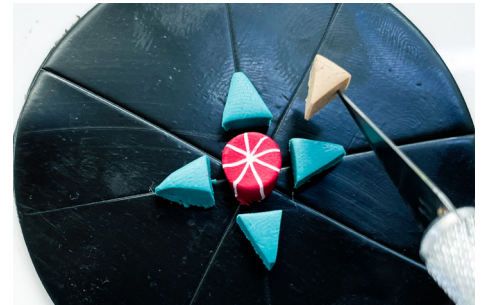
Using the dull edge of a tissue blade make 4 indentations in the clay as a pie section guide.



Start from the middle adding a circle shape in the middle, in this case I used a slice of cane.



Roll the colored pieces of clay all to the same thickness, around 2 - 3 mm, and start to cut out the shapes you want to use. I used a turquoise sheet to, cut several triangles with a scalpel



Add the cut triangles onto the mosaic circle following the guidelines for placement. The pieces can be placed quite close together and do not worry if they aren't perfectly aligned or spaced. Tweezers and a scalpel may be helpful.



Small dot shapes can be created using corn flour on the micro cutters.



Keep adding elements.



The wavy blade can be used to create complex shapes.

Advent Calendar



Design your own composition. There are limitless design possibilities.



Enrich the piece with different shapes and colors such as these red rectangles.



Once you have added all the mosaic pieces, cure the mosaic on the ceramic tile for 30 minutes.



Mix some clay softener into the black clay until it resembles a thick stretchy consistency.



Using your fingers, a toothpick or other tool, start to press the soft clay in and around the mosaic shapes. As you go, keep firmly pressing the clay around the small mosaic shapes.



Once the mosaic is covered with the soft black clay, use a tissue blade to slice and scrape away as much of the black clay as you can from the surface.



Cure the mosaic again for 30 minutes.



Start to sand the black clay off to reveal the mosaic. Start with a very coarse grit sandpaper around 80, and work your way up to fine wet and dry 1000 grit sandpaper.



Polish the final mosaic with some renaissance wax.

Advent Calendar



Drill a hole and thread some cord.

